



Roxtec ComShelt™

Kit de sellado para armarios y casetas de telecomunicaciones

El Roxtec ComShelt™ es una solución de sellado para cables y tuberías de diferentes tamaños. Este marco ligero de material compuesto (composite) con unidad de compresión integrada está diseñado para su uso en armarios y casetas de telecomunicaciones. El producto se suministra en kits listos para utilizar que incluyen todos los componentes necesarios.



- Ligero
- Eficiencia de área
- Ofrece capacidad de repuesto incorporada

Características del producto



IP/UL NEMA

Estructura de instalación



Armarios envolventes & prefabricados

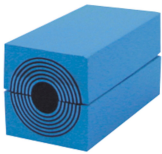
Calificaciones y certificados

Estanquidad

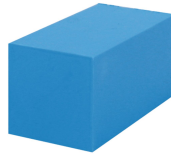
- IP 55

Datos de los componentes de sellado

Componentes de sellado



Módulo RM con Multidiameter™



Módulo de compensación sólido RM



Gel de ensamblaje Roxtec

Para obtener información detallada, visite [roxtec.com](https://www.roxtec.com).



Kits de sellos preconfigurados

mm/kg



COMSHELT L/6



COMSHELT L/18



COMSHELT S/12

Título	Configuración	Dimensiones externas WxHxD	Dimensiones de abertura w x h	Peso	N.º de art.
COMSHELT L/6	6x (24.0-54.0)	305 x 422 x 100	190(-2) x 310	3.9	CSL0000000006
COMSHELT L/18	6x (3.5-16.5), 12x (9.5-32.5)	305 x 422 x 100	190(-2) x 310	3.9	CSL0000000018
COMSHELT S/12	6x (3.5-16.5), 6x (9.5-32.5)	305 x 342 x 100	190(-2) x 230	3.6	CSS0000000012
COMSHELT S/30	30x (3.5-16.5)	305 x 342 x 100	190(-2) x 230	3.8	CSS0000000030

The product information provided by Roxtec does not release the purchaser of the Roxtec system, or part thereof, from the obligation to independently determine the suitability of the products for the intended process, installation and/or use.

Roxtec gives no guarantee for the Roxtec system or any part thereof and assumes no liability for any loss or damage whatsoever, whether direct, indirect, consequential, loss of profit or otherwise, occurred or caused by the Roxtec systems or installations containing components not manufactured by an authorized manufacturer and/or occurred or caused by the use of the Roxtec system in a manner or for an application other than for which the Roxtec system was designed or intended.

Roxtec expressly excludes any implied warranties of merchantability and fitness for a particular purpose and all other express or implied representations and warranties provided by statute or common law. User determines suitability of the Roxtec system for intended use and assumes all risk and liability in connection therewith. In no event shall Roxtec be liable for indirect, consequential, punitive, special, exemplary or incidental damages or losses.

The Roxtec products are offered and sold in accordance with the conditions of the Roxtec General Terms of Sales. The latest version of the Roxtec General Terms of Sales can be downloaded from <https://www.roxtec.com/en/about-us/about-roxtec/general-terms-of-sales/>

We reserve the right to make changes to the product and technical information without further notice. Any errors in print or entry are no claims for indemnity. The content of this publication is the property of Roxtec International AB and is protected by copyright.

This document was generated on: 2024-04-03